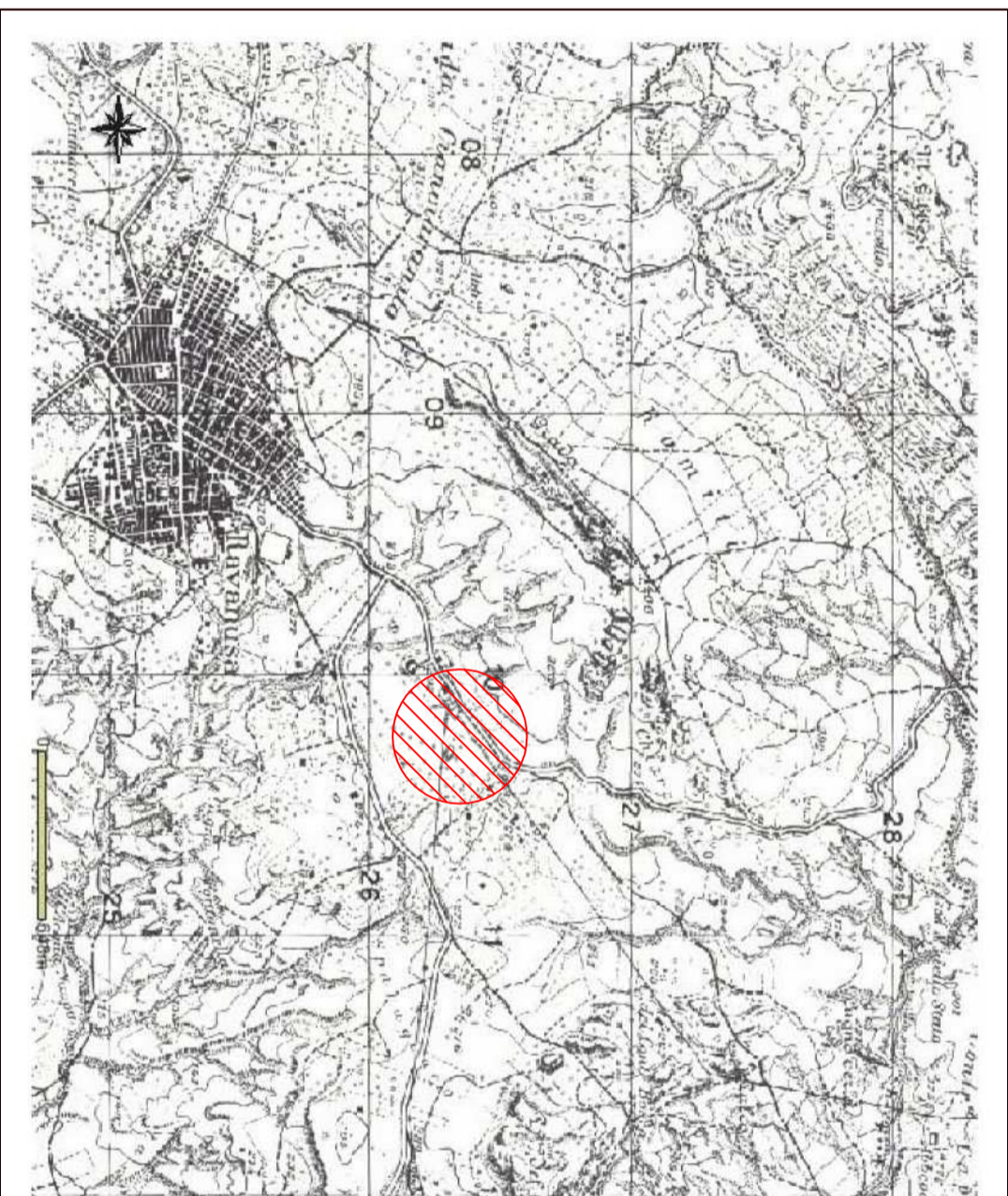


Corografia scala 1: 25000



Ortofoto scala 1: 5000



STUDIO TECNICO
 DOTT. ING.
 IGNAZIO LEONE
 VIA ARCO, 14
 S. STEFANO Q.N.A

COMUNE DI RAVANUSA
 (Provincia di AGRIGENTO)

OGGETTO: Progetto esecutivo per la messa in sicurezza di emergenza del sito ex discarica comunale per R.S.U. di contrada "Chiarchiaro"


TAV. 4.1
 Scala varie
INQUADRAMENTO TERRITORIALE
 Corografia e ortofoto

Ravanusa, It


VISTO: IL R.U.P.

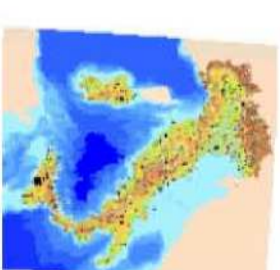
IL PROGETTISTA
 (DOTT. ING. IGNAZIO LEONE)







LEGENDA

 Area di intervento

LEGENDA

 Area di intervento



Legenda
 Comuni Fusso 33
 Comuni Fusso 32
 Province Fusso 33
 Province Fusso 32
 Regioni Fusso 33
 Regioni Fusso 32